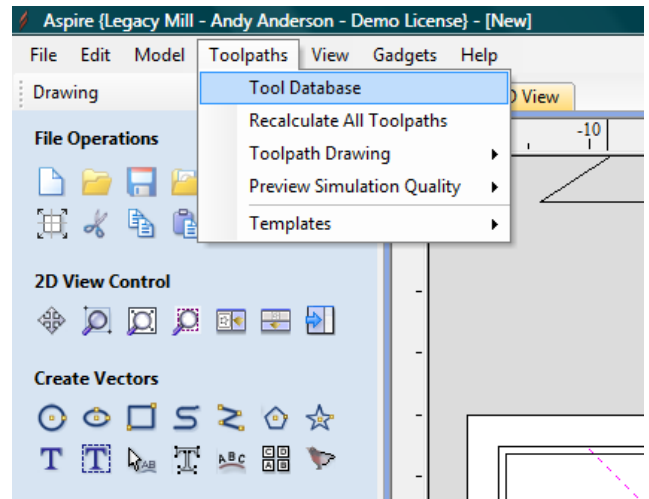


Importing tool library into V-carve or Aspire.

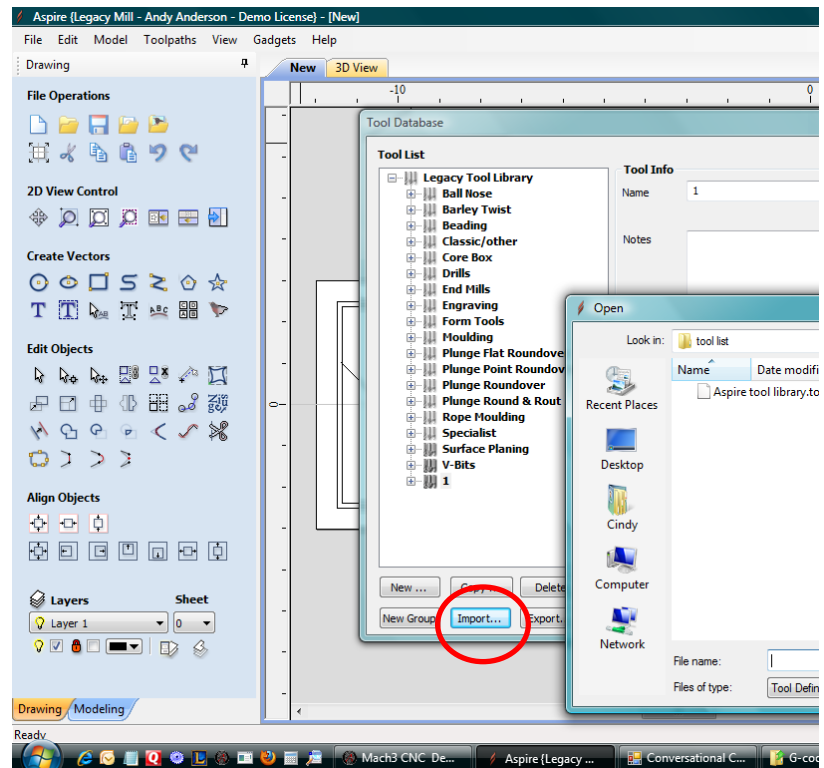
This process is available with the newest versions of V-carve Pro and Aspire.

Open the Tool Database found under the Toolpaths drop down menu.



The top of the Tool List will probably say Imperial. Click on Imperial, the new tool library will become a sub-file in the Imperial library.

Click—Import... found at the bottom of the Tool List screen. If an import button is not available, your version of V-carve Pro or Aspire does not offer this process. Contact Vectric for update information.



A file screen will appear—find the tool file and import. If you received the tool file as an email, you will need to save the tool file onto the desk top or other accessible file location.

The new tool list contains most of the Design Kit router bit profiles. Some bit designs, including the side reeding cutters cannot be generated in this program.

*It is important you take the time to review the Pass Depth, Step Over, Spindle Speed, Feed Rate and Plunge Rate for each tool as you use it. These values may not be set for your machine capabilities.

